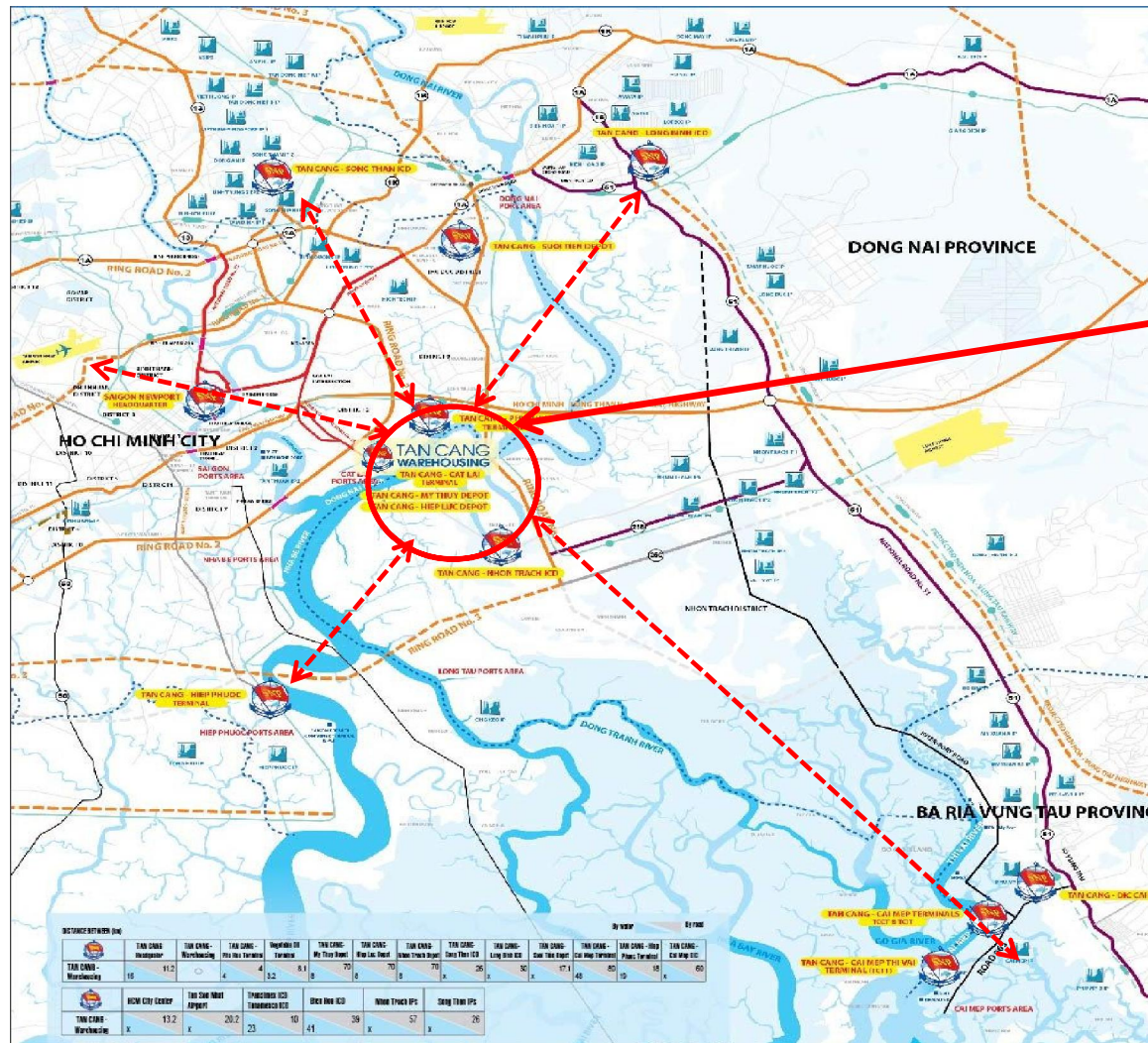


## CAT LAI BONDED WAREHOUSE

*Dear Valued Customers,*

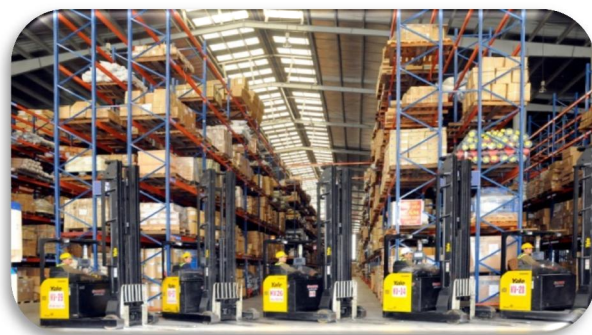
Firstly, Tan Cang Warehousing JSC would like to express our sincere thanks for your interest in our service. From **December 2015**, we opened **new service of Bonded warehouse** inside Tan Cang Cat Lai Port.

### SOUTHERN FOCAL ECONOMIC AREA OF VIETNAM



### STRATEGIC LOCATION

- ✓ Add: Warehouse No.5, 2<sup>nd</sup> Floor, Tan Cang-Cat Lai warehouse, Cat Lai Ward, Dist.2, HCMC
- ✓ Located inside Tan Cang – Cat Lai Port – the most modern and busiest port in Vietnam
- ✓ 15 km from HCM downtown
- ✓ 20 km from TSN Airport
- ✓ 25 km from IPs in Binh Duong, Dong Nai Province
- ✓ 20 km from Tan Cang Hiep Phuoc Port
- ✓ 70 km from Tan Cang-Cai Mep Port



## WAREHOUSE FACILITIES

- ✓ Total area: 13,350 sqm, in which:
- ✓ Warehouse area: 6,250 sqm (3.500 pallets)
- ✓ CY area: 7,000 sqm
- ✓ Customs office area: 100 sqm
- ✓ Start operation: December 2015
- ✓ No. of gate: 5 elevators
- ✓ Charging room: 1 room
- ✓ CCTV: 23 pcs
- ✓ Fully equipped with Fire prevention and fighting system

## BENEFITS TO CUSTOMER

- ✓ Time and Cost savings as warehouse located inside Cat Lai Port.
- ✓ Fast and simple operation procedures
- ✓ Various kinds of import/ export cargo can be stored in Bonded warehouse: Consumer goods, Materials, etc.
- ✓ Security for cargo: CCTV, Burglar alarm system, safety guards
- ✓ Warehouse is new built with modern design and well-equipped
- ✓ Gate C is put into operation specifically for truck less than 15MTs with help to reduce traffic jam
- ✓ WHS staff, stevedores are well trained & skillful
- ✓ 24/7 support



***FOR FURTHER INFORMATION, PLEASE KINDLY CONTACT US AT:***

**TAN CANG WAREHOUSING JSC.**

**GATE C, Tan Cang – Cat Lai Port, Cat Lai Ward, Dist.2, HCMC,  
Vietnam**

**MARKETING DIVISION**



**+84 989 226 931**  
**(Ms. Trang)**

**+84 916 814 368**  
**(Ms. Tuyết)**



**trangntt1@saigonnewport.com.vn**

**tuyetvt@saigonnewport.com.vn**

**[www.tancangwarehousing.com.vn](http://www.tancangwarehousing.com.vn)**